

**RUSTY
ACTIVITY!**

RUSTY'S TIME TRAVELLING ADVENTURES



THE MUSEUM BUILDING

Rusty the Dog has been travelling in time and you can explore with him through his activity packs and videos. You can also read stories of his adventures on the Weston Museum website.

The building that now houses Weston Museum was originally the workshops and offices of the Gaslight Company. It opened in 1912 and was designed by Architect, Hans Fowler Price, who also designed a number of other buildings around Weston-super-Mare.

HANS FOWLER PRICE; WESTON'S ARCHITECT

The front of the museum building is very ornate; there are lots of different shapes on it. We're going to explore this building and another designed by Hans Price.

If you would like to go on a walking trail of other Hans Price buildings around Weston (there are lots!), you can download a walking trail by going to the Weston-super-Mare Town Council website. Under the 'Our Services' section, you can find a tab all about the town's Blue Plaque scheme, which includes a plaque dedicated to Hans Price.



**WESTON
MUSEUM**

@westonmuseum #westonmuseumrusty

RUSTY
ACTIVITY!

RUSTY'S TIME TRAVELLING ADVENTURES



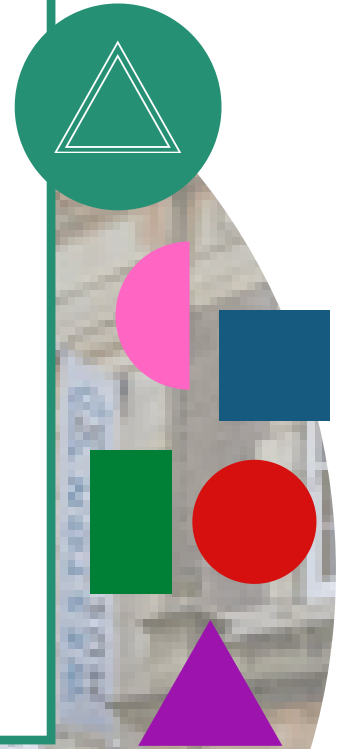
THE MUSEUM BUILDING

WHAT SHAPES CAN YOU SEE?

Below is an outline version of the front of the museum building. You can trace over the image with a pencil or just with your finger.

- Can you see any triangles?
• How many?
- Can you see any squares?
• How many?
- Can you see any rectangles?
• How many?
- Can you see any semi-circles?
• How many?

Add the four numbers up. How many shapes are there altogether?



Triangles =
Squares =
Rectangles =
Semi-circles =

Total =



WESTON
MUSEUM

@westonmuseum #westonmuseumrusty

**RUSTY
ACTIVITY!**

RUSTY'S TIME TRAVELLING ADVENTURES



THE MUSEUM BUILDING

THE BLAKEHAY THEATRE

This building is now the Blakehay Theatre. In 1850 it was Weston's first Baptist Church and first public building. Hans Fowler Price was invited to re-design and make it bigger in 1862.

Can you create an outline image of it?

- How many circles does it have?
- How many arches?
- How many squares and how many rectangles?



SHOW US YOUR WORK!

Send us a picture of your work on social media, find us on Facebook, Twitter or Instagram @westonmuseum
Include the hashtag #westonmuseumrusty



**WESTON
MUSEUM**

@westonmuseum #westonmuseumrusty